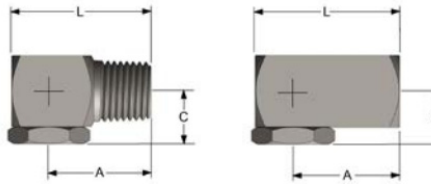
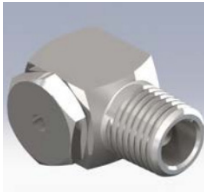
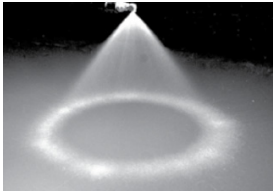


Threaded Nozzles – Hollow Cone Series H



Model male	Dim. A (mm)	Dim. L (mm)	Dim. C (mm)	Model female	Dim. A (mm)	Dim. L (mm)	Dim. C (mm)
1/8H	18	25	10	1/8FH	18	25	10
1/4H	24	25	13	1/4FH	24	25	13
3/8H	25	35	14	3/8FH	25	35	14
1/2H	35	48	19	1/2FH	35	48	19
3/4H	40	57	22	3/4FH	40	57	22

SPRAY CHARACTERISTICS:

A hollow cone spray pattern, emerging at right angles to the centerline of the pipe connection. The standard included angle of the spray cone is 70° at 0.7 bar. At low pressures hollow cone nozzles produce medium size, uniform droplets. At higher pressures finer droplets are produced.

CONSTRUCTION:

The models listed are machined from bar stock, and are two piece construction. Standard materials are brass, 303 stainless steel and 316 stainless steel. Some models available in other materials.

TYPICAL APPLICATIONS:

- Air and Gas Washing
- Aerating, Rinsing and Humidifying
- Industrial Washers and Spray Ponds
- Cooling Tunnels
- Roof Cooling
- Degreasing
- Dust Suppression
- Metal Treatment

Model Number		Thread BSPT	MAX. FREE PASSAGE (mm)	CAPACITY (L/min) AT VARIOUS PRESSURES (bar)												Spray Angle @			
female	male			0.2 bar	0.3 bar	0.5 bar	0.7 bar	1 bar	1.5 bar	2 bar	3 bar	4 bar	6 bar	8 bar	0.7 bar	1.5 bar	3 bar	6 bar	
1/8FH0.5	1/8H0.5	1/8"	0.71	--	--	--	--	--	--	0.32	0.39	0.46	0.56	0.64	--	--	40°	45°	
1/8FH1	1/8H1	1/8"	1.35	--	--	--	--	0.46	0.56	0.64	0.79	0.91	1.12	1.29	--	60°	74°	75°	
1/8FH2	1/8H2	1/8"	2.18	--	--	--	--	0.91	1.12	1.29	1.58	1.82	2.23	2.58	--	65°	72°	76°	
1/8FH3	1/8H3	1/8"	2.49	--	--	0.97	1.14	1.37	1.67	1.93	2.37	2.73	3.3	3.9	65°	76°	80°	83°	
1/8FH5	1/8H5	1/8"	3.25	--	1.25	1.61	1.91	2.28	2.79	3.2	3.9	4.6	5.6	6.4	70°	77°	80°	81°	
1/8FH7.5	1/8H7.5	1/8"	3.89	1.53	1.87	2.42	2.86	3.4	4.2	4.8	5.9	6.8	8.4	9.7	70°	86°	94°	94°	
1/8FH10	1/8H10	1/8"	4.34	2.04	2.5	3.2	3.8	4.6	5.6	6.4	7.9	9.1	11.2	12.9	70°	71°	73°	75°	
1/4FH1	1/4H1	1/4"	1.52	--	--	0.32	0.38	0.46	0.56	0.64	0.79	0.91	1.12	1.29	--	61°	74°	69°	
1/4FH2	1/4H2	1/4"	2.16	--	--	--	0.76	0.91	1.12	1.29	1.58	1.82	2.23	2.58	70°	75°	83°	85°	
1/4FH3	1/4H3	1/4"	2.82	--	--	0.97	1.14	1.37	1.67	1.93	2.37	2.73	3.3	3.9	70°	70°	72°	74°	
1/4FH5	1/4H5	1/4"	3.45	--	1.25	1.61	1.91	2.28	2.79	3.2	3.9	4.6	5.6	6.4	70°	77°	80°	83°	
1/4FH7.5	1/4H7.5	1/4"	4.22	1.53	1.87	2.42	2.86	3.4	4.2	4.8	5.9	6.8	8.4	9.7	70°	70°	74°	75°	
1/4FH10	1/4H10	1/4"	4.32	2.04	2.5	3.2	3.8	4.6	5.6	6.4	7.9	9.1	11.2	12.9	70°	74°	76°	80°	
1/4FH12.5	1/4H12.5	1/4"	4.5	2.55	3.12	4	4.8	5.7	7	8.1	9.9	11.4	14	16.1	70°	82°	83°	83°	
1/4FH15	1/4H15	1/4"	5.41	3.06	3.7	4.8	5.7	6.8	8.4	9.7	11.8	13.7	16.7	19.3	70°	73°	75°	75°	
3/8FH5	3/8H5	3/8"	3.45	--	1.25	1.61	1.91	2.28	2.79	3.2	3.9	4.6	5.6	6.4	70°	74°	76°	76°	
3/8FH7.5	3/8H7.5	3/8"	4.17	1.53	1.87	2.42	2.86	3.4	4.2	4.8	5.9	6.8	8.4	9.7	70°	74°	78°	82°	
3/8FH10	3/8H10	3/8"	4.93	2.04	2.5	3.2	3.8	4.6	5.6	6.4	7.9	9.1	11.2	12.9	70°	78°	80°	81°	
3/8FH12.5	3/8H12.5	3/8"	5.21	2.55	3.12	4	4.8	5.7	7	8.1	9.9	11.4	14	16.1	70°	80°	82°	84°	
3/8FH15	3/8H15	3/8"	5.89	3.06	3.7	4.8	5.7	6.8	8.4	9.7	11.8	13.7	16.7	19.3	70°	73°	75°	75°	
3/8FH20	3/8H20	3/8"	6.35	4.1	5	6.4	7.6	9.1	11.2	12.9	15.8	18.2	22.3	25.8	70°	73°	75°	75°	
3/8FH25	3/8H25	3/8"	7.09	5.1	6.2	8.1	9.5	11.4	14	16.1	19.7	22.8	27.9	32	70°	72°	73°	73°	
3/8FH30	3/8H30	3/8"	7.42	6.1	7.5	9.7	11.4	13.7	16.7	19.3	23.7	27.3	33	39	70°	70°	73°	72°	
1/2FH25	1/2H25	1/2"	7.49	5.1	6.2	8.1	9.5	11.4	14	16.1	19.7	22.8	27.9	32	70°	75°	76°	76°	
1/2FH30	1/2H30	1/2"	8.36	6.1	7.5	9.7	11.4	13.4	16.7	19.3	23.7	27.3	33	39	70°	78°	80°	81°	
1/2FH40	1/2H40	1/2"	9.37	8.2	10	12.9	15.3	18.2	22.3	25.8	32	36	45	52	70°	75°	75°	75°	
1/2FH50	1/2H50	1/2"	9.98	10.2	12.5	16.1	19.1	22.8	27.9	32	39	46	56	64	70°	70°	71°	73°	
1/2FH60	1/2H60	1/2"	10.69	12.2	15	19.3	22.9	27.3	33	39	47	55	67	77	70°	70°	71°	71°	
3/4FH40	3/4H40	3/4"	9.35	8.2	10	12.9	15.3	18.2	22.3	25.8	32	36	45	52	70°	71°	76°	79°	
3/4FH50	3/4H50	3/4"	10.69	10.2	12.5	16.1	19.1	22.8	27.9	32	39	46	56	64	70°	73°	74°	74°	
3/4FH60	3/4H60	3/4"	11.13	12.2	15	19.3	22.9	27.3	33	39	47	55	67	77	70°	75°	78°	80°	
3/4FH70	3/4H70	3/4"	11.91	14.3	17.5	22.6	26.7	32	39	45	55	64	78	90	70°	74°	76°	76°	
3/4FH80	3/4H80	3/4"	12.29	16.3	20	25.8	30.5	36	45	52	63	73	89	103	70°	73°	75°	76°	
3/4FH90	3/4H90	3/4"	12.7	18.3	22.5	29	34	41	50	58	71	82	100	116	70°	70°	71°	73°	
3/4FH100	3/4H100	3/4"	12.88	20.4	25	32	38	46	56	64	79	91	112	129	70°	73°	76°	78°	
3/4FH110	3/4H110	3/4"	14.61	22.4	27.5	35	42	50	61	71	87	100	123	142	70°	72°	75°	72°	
3/4FH120	3/4H120	3/4"	14.43	24.5	30	39	46	55	67	77	95	109	134	155	70°	70°	71°	71°	